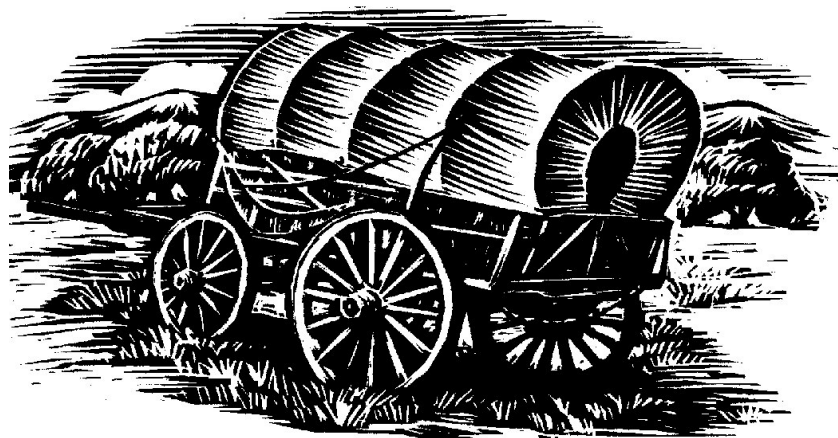


G THE M R O C K

INDEPENDENCE GEM & MINERAL SOCIETY

Independence Missouri



I.G.A.M.S

VOL. 57 NO. 01

CHARLEY MAAZOUZ, Editor
1600 E 80th St
Kansas City, MO 64131

FIRST CLASS MAIL



INDEPENDENCE GEM AND MINERAL SOCIETY

The Independence Gem and Mineral Society was founded in February 1948 for purposes of generating interest in the field of Geology. Our purposes are to promote interest in Faceting, Fossils, Lapidary, Minerals, Art MetalCraft, etc, have classes, field trips and create public awareness and interest through our club programs, outreach to schools, libraries and Gem and Mineral shows.

THE GEMROCK is the official newsletter of IGAMS. Send articles and correspondence to:
Editor, 1600 E 80th Street, Kansas City, MO 64131.

Permission for reprinting is granted if proper credit is given to the author and **THE GEMROCK**.

MEETING PLACE: January 20 Meeting, Greenbriar Fountains. 2100 Swope Drive, Independence, Missouri 64057

DUES: Family \$15.00 Singles \$10.00 Juniors \$5.00

AFFILIATIONS: American Federation of Mineralogical Societies
Midwest Federation of Mineralogical and Geological Societies
Association of Earth Science Clubs of Greater Kansas City

NEWSLETTER DEADLINE: Submissions for the February newsletter to the editor no later than **February 5, 2005**.

For information on our club, please e-mail our webmaster at:

igamsinfo@yahoo.com



MEETING: January 20
TIME: 7:30 pm
PLACE: Greenbriar Fountains, 2100 Swope Drive, Independence

PRESIDENT’S MESSAGE

I want to wish a Happy New Year to everyone. I do hope that this year will be an exciting and fulfilling one for the club, its members and for the Association.

Now is the time to be planning your exhibits for the Gem and Mineral Show that is fast approaching. It will be here before we know it. For me it is an exciting time of meeting friends, learning from exhibits and demonstrations and promoting our hobby to the public.

I do hope that we can work at getting new members this year as we have lost many due to conflicting schedules, health or lack of interest. If we love our hobby and club enough then we should be able to share with those who might have an interest and learn more.

Hope to see you all at the January meeting!

Rebecca B., President

MINUTES OF THE MONTHLY MEETING OF IGAMS

December 16, 2004

The meeting was brought to order by our President. Molly reported \$761.88 in the checking account and reminded members to complete the information sheet in the GEM ROCK and submit it with their dues to be included in a new phone book. Kathy read the minutes of the previous meeting.

Ted reported the Association was busy finalizing plans for the March Show. There is still a need for someone to chair the dinner on Thursday evening. Because having the dinner catered is prohibitively expensive they were considering asking each Club to be responsible for a portion of the meal. Bruce announced that a floor plan meeting is scheduled for January 9 at 2:00 in Kara’s shop, Three Trails. Betty reported she is working on finalizing agreements for Special Exhibits at the show.

(Minutes...cont’d)

Ted announced the Quartzite Show in Arizona would start on January 26 next year, that next month we would use Mica for our Rock of the Month, and that he wanted ideas for Field Trips. He is planning the first trip to Grandby near Joplin. He also reminded members we plan to celebrate Francis Blake’s 90th birthday at our January meeting with a cake.

Ted told members he had enjoyed being our president for two years and thanked members for their patience during trying times of funding and finding a meeting place and he welcomed the new slate of officers for the New Year. Vaughn thanked Ted for his service to the Club and expressed the member’s gratitude.

After a break for snacks, members enjoyed the gift exchange and fellowship with fellow “rock hounds”.

Kathy T, Secretary

 **2005 FIELD TRIP SCHEDULE** 

Field Trip Planning meeting is scheduled for January 16. Please contact Ted F. if you have any suggestions for club field trips in the upcoming year.



DATES TO REMEMBER:

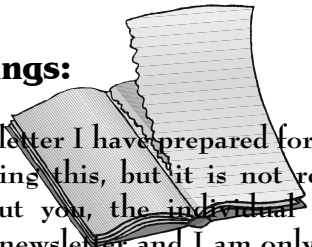
- Feb 26-27 Roseville, MN Anoka Gem & Mineral Club, Har Mar Mall.
- Mar 11-13 Kansas City, MO 44th Annual Gem and Mineral Show; KCI Expo Center.
- Mar 11-13 Ada, OK Gem, Mineral and Fossil Club swap, show and sale.
- Mar 18-20 Sayre, PA Eastern Federation Show.
- April 9-10 Lincoln, NE 47th Annual Show, Lincoln Gem & Mineral Club; Pershing Auditorium, 226 Centennial Mall; Saturday 9-6, Sunday 10-5.
- April 22-24 Wichita, Kansas 53rd Annual Show; Wichita Gem & Mineral Society; Cessna Activity Center, 2744 George Washington Blvd; Friday 9-2; Saturday 10-7; Sunday 10-5.

April 23-25 Cedar Rapids, IA. Midwest Federation Show.
 June 17-19 Colorado Springs, CO. Rocky Mountain Federation Show.

PROGRAM NOTE:

Our January Program will be presented by Bruce S. and will be "Old Mines of the Tri-State District".

Editorial Ramblings:



This is the fifth newsletter I have prepared for our club. I do enjoy doing this, but it is not really about me, it is about you, the individual club members. It is your newsletter and I am only the editor. Our club members are a wealth of information. Information is worthless unless it is shared. So come on people, share the wealth. Write an article for YOUR newsletter. Let the editor know what you would like to see in the newsletter. Let your club officers know what you would like to see at our meetings.

Mohs Scale of Mineral Hardness

In 1812 the Mohs scale of mineral hardness was devised by the German mineralogist Frederich Mohs (1773-1839), who selected the ten minerals because they were common or readily available. The scale is not a linear scale, but somewhat arbitrary.

HARDNESS	MINERAL	ASSOCIATIONS & USES
1	Talc	Talcum powder.
2	Gypsum	Plaster of paris. Gypsum is formed when seawater evaporates from the Earth's surface.
3	Calcite	Limestone and most shells contain calcite.
4	Fluorite	Fluorine in fluorite prevents tooth decay.
5	Apatite	When you are hungry you have a big "appetite".

6	Orthoclase	Orthoclase is a feldspar, and in German, "feld" means "field".
7	Quartz	
8	Topaz	The November birthstone. Emerald and aquamarine are varieties of beryl with a hardness of 8.
9	Corundum	Sapphire and ruby are varieties of corundum. Twice as hard as topaz.
10	Diamond	Used in jewelry and cutting tools. Four times as hard as corundum.

Hardness of some other items:

- 2.5 Fingernail
- 2.5-3 Gold, Silver
- 3 Copper penny
- 4-4.5 Platinum
- 4-5 Iron
- 5.5 Knife blade
- 6-7 Glass
- 6.5 Iron pyrite
- 7+ Hardened steel file

www.amfed.org/t_mohs.htm

INTERNET RESOURCES

Rockhound Primers, General References

Bob's Rock Shop www.rockhounds.com
 (news, primer, resources, and more)

Canadian Rockhound www.canadianrockhound.ca
 (primer, resources)

DinoData www.dinodata.net

Earth Online: www.brookscole.com/geo/ritter
 Internet Guide for Earth Science

GeologyLink www.geologylink.com
 (news, virtual field trips, education)

Prehistoric Planet www.prehistoricplanet.com
 (news, articles, art)

Univ Nebraska Agate Page
<http://csd.unl.edu/agates/agatepageintro.asp>

Federations and Organizations

American Federation of Mineralogical Societies
(AFMS)
www.amfed.org

Archaeological Institute of America
www.archaeology.org

Association of American State Geologist (AASG)
with links to state Geological Surveys
www.stategeologists.org/AASG.html

Fluorescent Mineral Society
www.uvminerals.org

Mid-America Paleontology Society (MAPS)
<http://midamericapaleo.tripod.com>

Minerological Society of America
www.minsocam.org

PALEOMAP Project www.scotese.com

*ed note: This is very impressive! The tectonic animations are
WOW!!

All the above web sites courtesy of the MWF Resources
web page



www.amfed.org/mwf/resources

TOO COLD FOR A FIELD TRIP?

When the thermometer refuses to rise above freezing, the wind is blowing and the sun has refused to shine for days on in, maybe a field trip in the great outdoors is not the first thing you would think of. Of course, cruising around the countryside and noting the total absence of weeds as tall as an elephant's eye does bring to mind how much easier it is to find the darn rocks when you can actually SEE the darn rocks!

Nevertheless, there are a number of things a rockhound might do under these circumstances other than try out for a case of frostbite. The Midwest Federation has listed a number of museums in Missouri that may well be worth a trip.

Geology Museum, University of Missouri,
Columbia, MO 65211, (573) 882-6785

Golden Pioneer Museum
Hwy 86 & J, Golden, MO (between Branson,
MO and Eureka Springs, AR). FREE. Open
March 1 - October 31, Tuesday-Saturday,

9:30 AM - 5:30 PM. Historical objects and mineral oddities, including the world's largest turquoise carving (carved in China from nugget weighing 68 pounds), a 1250-lb double-terminated single quartz crystal, and a 7-foot petrified tree estimated to be over 250 million years old

Kansas City Museum
3218 Gladstone Blvd., Kansas City, MO
64123, (816) 483-8300. Extensive collection of minerals, fossils, and Native American artifacts organized in drawers, viewed by appointment.

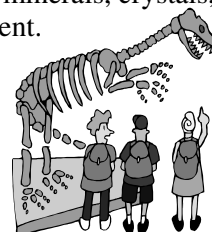
Missouri Mines State Historic Site
PO Box 492, Park Hills, MO 63601, (573)
431-6226. Art Hebrank, Site Administrator.
Large mining machinery, extensive Missouri
mineral collection, plus world-wide minerals

Museum of Anthropology, University of Missouri
100 Swallow Hall, Columbia, MO 65211,
(573) 882-3764. Native American artifacts
from 9000 BC to the 20th century.

Museum of Art & Archaeology, University of
Missouri Pickard Hall, Columbia, MO
65211, (573) 882-3591. Pre-Columbian
Central and South American artifacts.

St. Louis Science Center
5050 Oakland Ave., St. Louis, MO 63110,
(314) 533-8285. Extensive fossil, mineral,
and artifact collections, but most are not
currently displayed, since the Center is now
mostly interactive displays. Private tours of
the collection can be arranged. Separate fees
for general admission, Planetarium, and
Omnimax theater.

Tri-State Mineral Museum
Schifferdecker Park, Joplin, MO 64801,
(417) 673-2341. Regular hours are seasonal.
For special visits during off hours, call (417)
624-0820, ext. 471. The museum is devoted
to Tri-State minerals, crystals, mining tools,
and equipment.



YOU MIGHT BE A ROCKHOUND IF ...

- 1
- * You think road cuts are built as tourist attractions
 - * You describe your vacations by the rocks you brought home.
 - * The rockpile in your garage is over your head.
 - * Your PC screen saver features pictures of rocks.
 - * You find rocks when you empty your pockets at night.
 - * You went to a rock festival and you hate music.
 - * You gave rocks, tumblers, or rock tools for Christmas.
 - * When friends say they're going to Tucson, you assume it'll be in February.
 - * You can find Quartzsite on a map in less than 5 seconds.
 - * When someone mentions "Franklin" you think of New Jersey rather than Ben.
- 2
- * You can pronounce "molybdenite" correctly on the first try.
 - * The polished slab on your bola tie is six inches in diameter
 - * The bookshelves in your home hold more rocks than books; and the books that are there are about rocks.
 - * On a trip to Europe, you're the only member of the group who spends their time looking at cathedral walls through a pocket magnifier.
 - * You think you KNOW how to pronounce "chalcedony."
 - * You are thinking about giving out rocks for Halloween.
 - * You planted flowers in your rock garden.
 - * You purchase things like drywall compound just to have another nice bucket to carry rocks in.\
 - * The club you belong to uses rocks for center-pieces for the annual Christmas dinner.
 - * The first thing you pack for your vacation is a chisel and a hammer.
- 3
- * You spend hours and hours in the ugliest room in your house.
 - * You give directions like, "turn right at the green farmhouse..."
 - * You bought the ugliest boots available cause they were waterproof.
 - * You know what findings are for.
 - * You watch the scenery in movies instead of the actors.
- 4
- * Your company asks you not to bring any more rocks to the office until they have time to reinforce the floor.
 - * The local jewelry stores & libraries give out your name for information on rock clubs.
 - * You examine individual rocks in driveway gravel.
 - * Your wife knows you are down in the basement sorting rocks but can't quite find you nor does she remember that pretty wall down there.
 - * Your local rock shops send you get well cards when you don't stop by in more than a week.
- 4
- * The baggage handlers at the airport know you by name and refuse to help with your luggage.
 - * The local university's geology department asks permission to hold a field trip - in your back yard.
 - * The city sends you a letter informing you a landfill permit is required to put any more rocks in the back yard.
 - * UPS has a regular pickup and delivery schedule for your house.
 - * You can debate for hours on the differences between spectrolite and labradorite.
 - * You shouted "Obsidian!" to a theater full of movie-goers while watching the Shawshank Redemption.
 - * Your children have names like Rocky, Jewel, and Beryl.
 - * You get excited when you find a hardware store with 16 pound sledge hammers and 5 foot long pry bars.
 - * You debate for months on Internet about whether vibratory or drum tumblers are best.
 - * You can't remember the last time your car still fit in the garage.
- 5
- * Local science teachers plan field trips to your back yard.
 - * You have a two car garage and your 4WD pickup has to sit in the driveway.
 - * They won't give you time off from work to attend the Tucson Gem and Mineral Show and you go anyway.
 - * You begin fussing because the light strips you installed on your bookshelves aren't full spectrum.
 - * You've spent more than ten dollars on a rock.
 - * You still think pet rocks are a pretty neat idea.
 - * You have amethyst in your aquarium.
 - * You associate the word "hard" with a value on the Mohs scale instead of "work".

- * You know the location of every rock shop within a 100 mile radius of your home.
 - * You're retired and still thinking of adding another room to your house.
- 6
- * You're planning on using a pick and shovel while you're on vacation.
 - * Your spelling checker has a vocabulary that includes the words "polymorph" and "pseudomorph".
 - * You know where Tsumeb is.
 - * You think Franklin, New Jersey might be a cool place to go on a vacation.
 - * You put a web page about rocks on the internet.
 - * Your car hasn't seen the inside of your garage for ten years.
 - * You associate the word "saw" with diamonds instead of "wood".
 - * You begin wondering what a set of the Mineralogical Record is worth.
 - * You decide not to get married because you'd rather keep the rock.
 - * You make a backpack for your dog.

- 7
- * You've spent more than ten dollars for a book about rocks.
 - * You have mineralogical database software on your computer.
 - * You send your family on ahead into McDonald's so you can check the gravel in the flower beds.
 - * You have 137 empty squeeze syrup bottles washed and ready to use as squeeze bottles on the next field trip.

THIS LIST WAS WRITTEN BY MEMBERS OF THE GMEDITORS
E-MAIL SWAP GROUP.
Contributors included Mel Albright, Richard Busch, Betty
Commean, Dan Imel, Bob Keller, Paul Kline



SAFETY FIRST

By Bill Klose, AFMS Safety Chair

FROST-BITE and HYPOTHERMIA

Frost-bite is the cutting off of circulation to and possibly the destruction of superficial tissues, especially to hands, feet, ears, and nose as well as other areas of the body exposed to cold temperatures. The wind (wind chill factor) and moisture can add to the effects of cold temperature, even when above freezing.

FROST-BITE...cntd

Symptoms of frost-bite begin as a prickly feeling on exposed areas of the skin followed by numbness and waxy looking patches. In more severe cases, these waxy patches get lumpy, redden, blister, followed by the skin tying and falling off or gangrene setting in. Severe pain is associated w advanced frost-bite.

At the first signs of frost-bite, dry the affected area and cover with cloth or in the case of hands, place into the armpits to prevent further cooling. Do not rub or apply snow to the frost-bitten area. The affected area can be placed in water a little above body temperature, but not above 104 degrees F. Do not place the affected area under hot running water, there will not be any feeling initially so it may become burned. As the frost-bitten area "thaws" it is normal to feel pain or a burning sensation. If blisters form, do not break and protect them with a loose dressing and seek medical attention immediately.

Hypothermia is the loss of body temperature and can be life-threatening. The symptoms are initially uncontrollable shivering with pale and numb skin. The person then becomes confused and forgetful, acts tired, and wants to sit or lie down. In severe cases the person will become unconscious, have shallow breath, erratic heartbeat, and then the pulse weakens and slows.

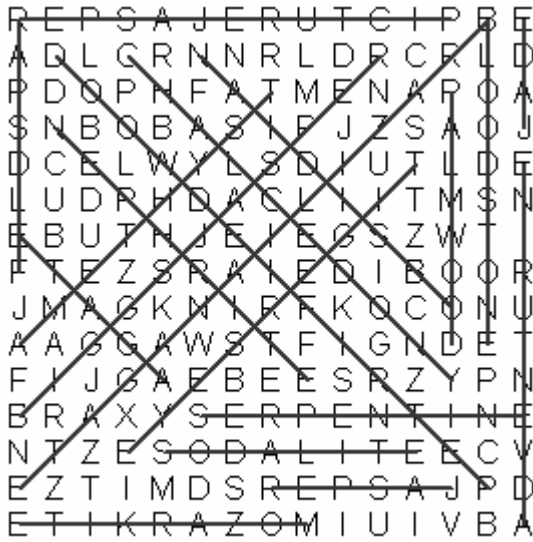
At the first signs of hypothermia, take the victim to a warm, dry place and give them hot liquids (not alcohol). Prevent further heat loss with warm blankets, warm rocks or a companion in bed with the victim. Get medical attention as soon as possible if the symptoms have gone beyond the shivering stage.

The best protection against frost-bite and hypothermia is to keep warm, keep moving and keep dry. Dress in loose layers of warm, waterproof and windproof clothing that covers exposed areas. Warm gloves and a hat are essential. Up to 80% of the body's warmth can be lost through an uncovered head. The young and elderly are especially at risk, as are people who have been drinking alcohol, have diabetes or poor circulation. People taking beta blockers to lower blood pressure are also at high risk. It is best to have someone with you in cold weather who can watch for signs of frost-bite and hypothermia.

Enjoy a safe 2004-2005 winter season.

SOLUTION TO LAST MONTH'S PUZZLE:

LAPIDARY MINERALS

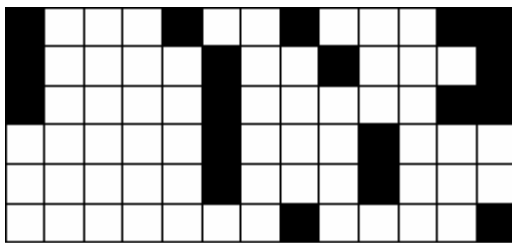


CLUB DIRECTORY REMINDER

Don't forget your club dues are due, and we need an updated Information Form to include your information in the Club Directory.

THE SHOW

Find the hidden phrase by using the letters directly below each of the blank squares. Each letter is used once.



E O D C A
 T N M R F M S
 N R U E S A S H E H
 M Y O W H L O T E O T
 R I A C R A G E R H T N D
 M A I E Y I T O S G E W E

Can you decipher the message above? It is a game plan for the next few months!

WHY IS THERE THIS BIG EMPTY SPACE? MAYBE THIS IS WHERE YOUR STORY COULD HAVE GONE, IF YOU HAD

ONLY GOT IT WRITTEN. THE DEADLINE FOR THE FEBRUARY NEWSLETTER IS FEBRUARY 5.

IF YOU DO NOT HAVE ACCESS TO A COMPUTER, I WOULD BE GLAD TO TYPE YOUR ARTICLE IN ELECTRONIC

FORMAT FOR YOU, BUT YOU GOTTA GET IT WRITTEN AND TO ME PRIOR TO THE DEADLINE!!!

